

“MOON RIVER”

by

Henry Mancini

**An intermediate-level student work
for guitar ensemble**

Arrangement

By

Peter Altmeier-Mort



Score and Parts

FOREWORD

Arranger's Notes

This is a 5 part ensemble for guitar students of an intermediate level. In group playing, it is accurate to say that the better the players the better the musical result. But there is, if necessary, the scope to utilise players of a slightly lower standard on certain parts in this arrangement.

This is particularly possible on the Guitar 3 part which uses 1st position arpeggios over the upper 4 strings, and the Guitar 4 part which uses 1st position bass notes over the lower 3 strings.

Guitarists playing the Guitar 1 and 2 parts will need to know the melody notes up to the 12th fret on the upper 2 strings. The Guitar 5 part provides a strong harmonic accompaniment for the arrangement, and this player needs to be reliably competent with bar chords in several places.

Dynamic markings have not been included, and these can be determined for performance by the Ensemble Director, as it is to some degree dependent upon the number of players loaded onto each part. As a general guide for a balanced sound in a 7 or 8 piece ensemble group, the following ratios are suggested: Guitar 1 - two players, Guitar 2 - two players, Guitar 3 - one or two players, Guitar 4 - one player and Guitar 5 - one player. Nevertheless, such configurations are always reliant upon the individual strengths of the students involved, and become another discretionary judgment for the Ensemble Director.

Peter Altmeier-Mort
October 2014.

Music Type-Setting, Text, Layout and Design,
by
Notable Productions

Email: notprod@bigpond.net.au

Published by Westside Music

Email: westside@tower.net.au

Website: www.classicalguitarhowto.com

Moon River

by Henry Mancini
Arranged for Guitar by
Peter Altmeier-Mort

Medium Waltz $\text{♩} = 36$

A

Intro

Musical score for the Intro section (measures 1-5) of Moon River. The score is written for five guitar parts (Guitar I to V) in 3/4 time. The key signature is one sharp (F#). The tempo is marked 'Medium Waltz' with a quarter note equal to 36 beats per minute. The dynamics are marked *mp* (mezzo-piano) for the first four measures and *mf* (mezzo-forte) for the fifth measure. The first four measures are marked with *p* (piano) and *mp*. The fifth measure is marked with *mf*. The guitar parts are: Guitar I (treble clef, whole rests), Guitar II (treble clef, whole rests), Guitar III (treble clef, eighth notes with accents *i*, *m*, *a*), Guitar IV (treble clef, whole rests), and Guitar V (bass clef, chords with *mp*). The fifth measure is marked with *8va on repeat* and *mf*. The chord for Guitar V in the fifth measure is *CMa7*.

Musical score for the main section (measures 6-10) of Moon River. The score is written for five guitar parts (Guitar I to V) in 3/4 time. The key signature is one sharp (F#). The tempo is marked 'Medium Waltz' with a quarter note equal to 36 beats per minute. The dynamics are marked *mp* (mezzo-piano) for the first four measures and *mf* (mezzo-forte) for the fifth measure. The guitar parts are: Guitar I (treble clef, whole rests), Guitar II (treble clef, quarter notes), Guitar III (treble clef, eighth notes), Guitar IV (treble clef, whole rests), and Guitar V (bass clef, chords). The chords for Guitar V are: *Am7* (measure 6), *FMa7* (measure 7), *C/E* (measure 8), *FMa7* (measure 9), and *C/E* (measure 10). The first measure of the main section is marked with *8va on repeat* and *mf*. The first measure of the main section is marked with *8va on repeat* and *mf*. The first measure of the main section is marked with *8va on repeat* and *mf*.

11

I *mp* (8) *at pitch*

II

III

IV

V Bm7(b5) E7 Am7 C7/G FMa7

16

I

II

III

IV

V Bb9 Am V F#m7(b5) IV B7 II Em7 A7 Dm7 G13 G7

B

21

I *mf*

II

III

IV

V CMa7 Am7 FMa7 C/E FMa7

26

I

II

III

IV

V

C/E Bm7(b5) E7 Am Am7/G

31

I

II

III

IV

V

F#m7(b5) F7 C/E FMa7 C/E

To Coda on repeat Θ

36

I

II

III

IV

V

FMa7 C/E Am7 Dm7 V G13 III

From A \oplus Coda

41

I

II

III

IV

V

C6 Am7 Dm7 III G13 G7 C6

46

I

II

III

IV

V

Am7 FMa7 G7 III C6 Am7

51

rit. *a tempo* *rit.* *molto rit.*

I

II

III

IV

V

mp *let ring* *p* *let ring*

p *flesh dim.* *dim.* *p*

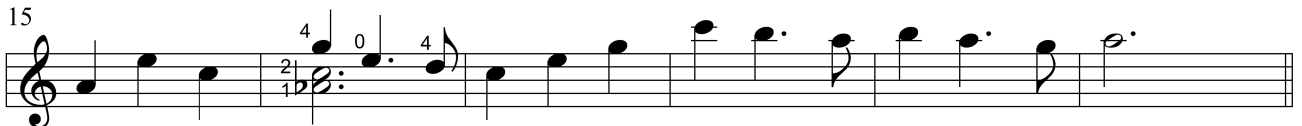
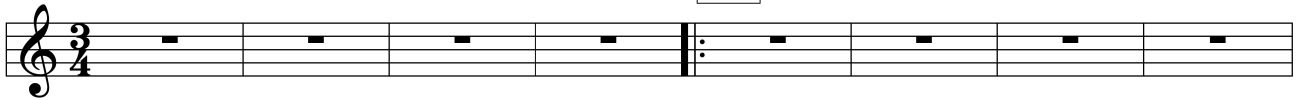
Dm7 Db9 CMa9(#11)

Moon River - Guitar I

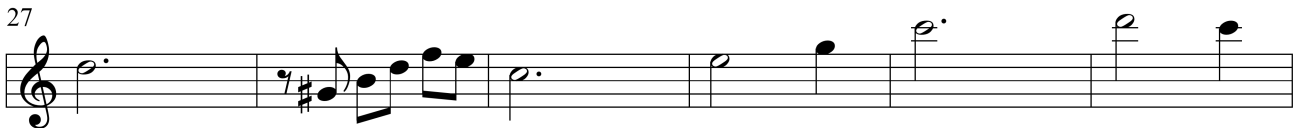
Medium Waltz ♩ = 36

Intro

A



B

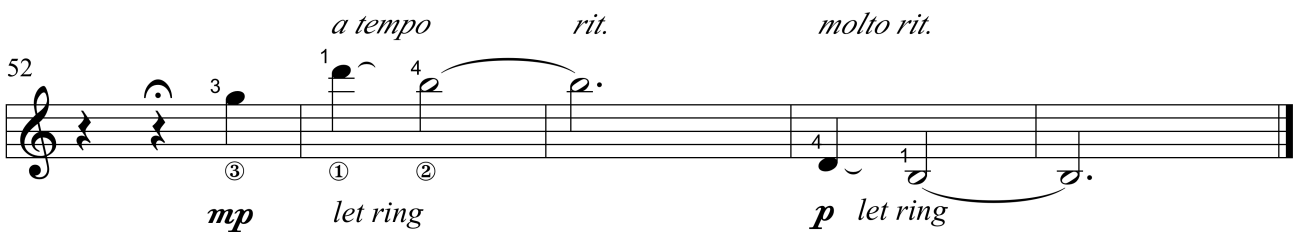
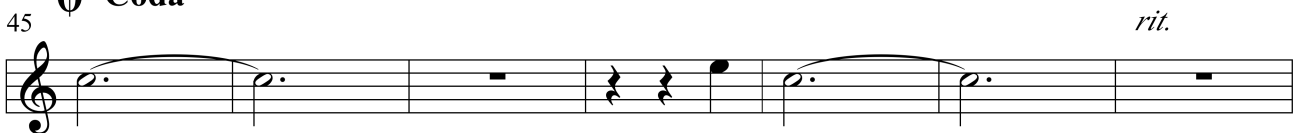


To Coda on repeat ⊕

From A



⊕ Coda



Moon River - Guitar II

Medium Waltz ♩. = 36

A

Intro

8va on repeat -----

mf

7 -----(8)-----, at pitch

13

B

18

25

32

To Coda on repeat ⊕

From A

38

⊕ Coda

45

51

rit. *a tempo* *rit.* *molto rit.*

p

Moon River - Guitar IV

Medium Waltz $\text{♩} = 36$

A

Intro

mp

9

B

18

26

To Coda on repeat ⊕

33

From A ⊕ Coda

41

49

rit. a tempo rit. molto rit.

p flesh dim. p

Moon River - Guitar III

Medium Waltz $\text{♩} = 36$

Intro

Musical notation for the Intro, measures 1-4. The piece is in 3/4 time. The first measure starts with a piano (*p*) dynamic. The notes are: G4 (piano), A4 (piano), B4 (piano), C5 (piano), B4 (piano), A4 (piano), G4 (piano). The second measure: G4 (piano), A4 (piano), B4 (piano), C5 (piano), B4 (piano), A4 (piano), G4 (piano). The third measure: G4 (piano), A4 (piano), B4 (piano), C5 (piano), B4 (piano), A4 (piano), G4 (piano). The fourth measure: G4 (piano), A4 (piano), B4 (piano), C5 (piano), B4 (piano), A4 (piano), G4 (piano).

A

Musical notation for section A, measures 5-8. Measure 5 is marked with a repeat sign and a 5 above the staff. The notes are: G4 (piano), A4 (piano), B4 (piano), C5 (piano), B4 (piano), A4 (piano), G4 (piano). Measure 6: G4 (piano), A4 (piano), B4 (piano), C5 (piano), B4 (piano), A4 (piano), G4 (piano). Measure 7: G4 (piano), A4 (piano), B4 (piano), C5 (piano), B4 (piano), A4 (piano), G4 (piano). Measure 8: G4 (piano), A4 (piano), B4 (piano), C5 (piano), B4 (piano), A4 (piano), G4 (piano).

Musical notation for section A, measures 9-12. Measure 9: G4 (piano), A4 (piano), B4 (piano), C5 (piano), B4 (piano), A4 (piano), G4 (piano). Measure 10: G4 (piano), A4 (piano), B4 (piano), C5 (piano), B4 (piano), A4 (piano), G4 (piano). Measure 11: G4 (piano), A4 (piano), B4 (piano), C5 (piano), B4 (piano), A4 (piano), G4 (piano). Measure 12: G4 (piano), A4 (piano), B4 (piano), C5 (piano), B4 (piano), A4 (piano), G4 (piano).

Musical notation for section A, measures 13-16. Measure 13: G4 (piano), A4 (piano), B4 (piano), C5 (piano), B4 (piano), A4 (piano), G4 (piano). Measure 14: G4 (piano), A4 (piano), B4 (piano), C5 (piano), B4 (piano), A4 (piano), G4 (piano). Measure 15: G4 (piano), A4 (piano), B4 (piano), C5 (piano), B4 (piano), A4 (piano), G4 (piano). Measure 16: G4 (piano), A4 (piano), B4 (piano), C5 (piano), B4 (piano), A4 (piano), G4 (piano).

B

Musical notation for section B, measures 17-21. Measure 17 is marked with a 17 above the staff. The notes are: G4 (piano), A4 (piano), B4 (piano), C5 (piano), B4 (piano), A4 (piano), G4 (piano). Measure 18: G4 (piano), A4 (piano), B4 (piano), C5 (piano), B4 (piano), A4 (piano), G4 (piano). Measure 19: G4 (piano), A4 (piano), B4 (piano), C5 (piano), B4 (piano), A4 (piano), G4 (piano). Measure 20: G4 (piano), A4 (piano), B4 (piano), C5 (piano), B4 (piano), A4 (piano), G4 (piano). Measure 21: G4 (piano), A4 (piano), B4 (piano), C5 (piano), B4 (piano), A4 (piano), G4 (piano).

Musical notation for section B, measures 22-25. Measure 22 is marked with a 22 above the staff. The notes are: G4 (piano), A4 (piano), B4 (piano), C5 (piano), B4 (piano), A4 (piano), G4 (piano). Measure 23: G4 (piano), A4 (piano), B4 (piano), C5 (piano), B4 (piano), A4 (piano), G4 (piano). Measure 24: G4 (piano), A4 (piano), B4 (piano), C5 (piano), B4 (piano), A4 (piano), G4 (piano). Measure 25: G4 (piano), A4 (piano), B4 (piano), C5 (piano), B4 (piano), A4 (piano), G4 (piano).

Musical notation for section B, measures 26-29. Measure 26 is marked with a 26 above the staff. The notes are: G4 (piano), A4 (piano), B4 (piano), C5 (piano), B4 (piano), A4 (piano), G4 (piano). Measure 27: G4 (piano), A4 (piano), B4 (piano), C5 (piano), B4 (piano), A4 (piano), G4 (piano). Measure 28: G4 (piano), A4 (piano), B4 (piano), C5 (piano), B4 (piano), A4 (piano), G4 (piano). Measure 29: G4 (piano), A4 (piano), B4 (piano), C5 (piano), B4 (piano), A4 (piano), G4 (piano).

30



34



To Coda on repeat \oplus

38

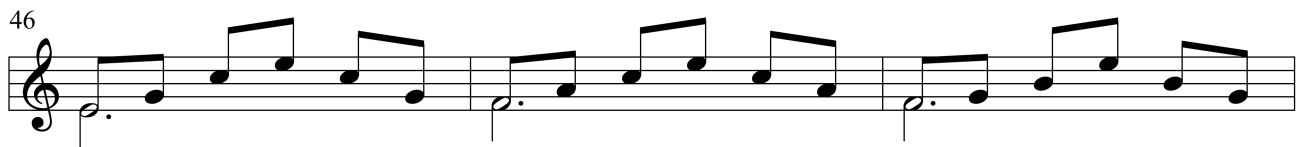


From A \oplus Coda

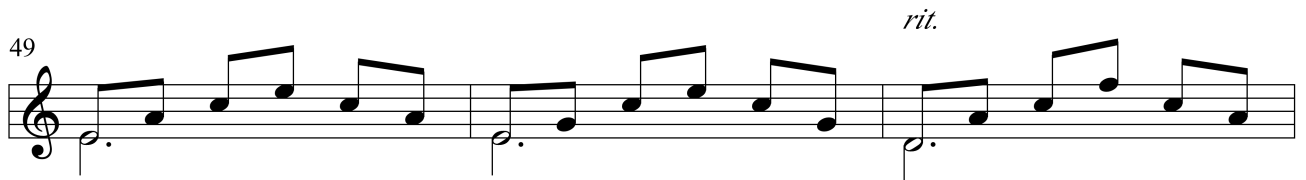
42



46

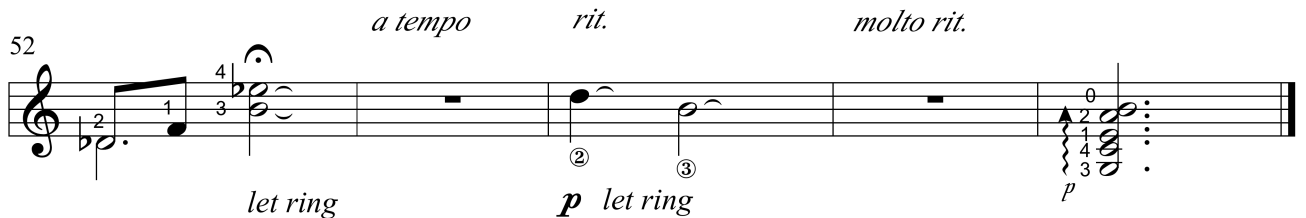


49



52

a tempo *rit.* *molto rit.*



Moon River - Guitar V

Medium Waltz $\text{♩} = 36$

A

Intro CMa7

CMa7

mp

6

Am7 FMa7 C/E FMa7 C/E

11

Bm7(b5) E7 Am7 C7/G FMa7

16

Bb9 Am F#m7(b5) B7 Em7 A7 Dm7 G13 G7

V IV II V III

B

CMa7

Am7

FMa7

C/E

FMa7

21

26 C/E Bm7(b5) E7 Am Am7/G

31 F#m7(b5) F7 C/E FMa7 C/E

To Coda on repeat \oplus

36 FMa7 C/E Am7 Dm7 G13 C6

From A \oplus Coda

42 Am7 Dm7 G13 G7 C6 Am7

47 FMa7 G7 C6 Am7 Dm7 Db9

a tempo

CMa9(#11)

rit.

molto rit.

53

OTHER PUBLICATIONS BY THE AUTHOR

1. The Art of Classical Guitar Volumes 1, 2 & 3
2. Guitar for Kidz Volume I
Beginners classroom method with CD
3. Guitar For Kidz Volume II
Easy Two-part Solos
4. Guitar For Kidz Volume III
Ensembles For Guitar with CD (beginners level)
5. Guitar For Kidz Volume IV
More Ensembles For Guitar (intermediate level)
6. Guitar Chords For Kidz

Further information and direct enquiries on prices and availability can be made on the internet at:

www.classicalguitarhowto.com

or via E-mail:

info@classicalguitarhowto.com